



Link working and medical students – The Edinburgh experience

Sophie Carmichael, Helen Eborall,
Claire Gardiner, Liz Griffiths & Jen Learmonth



Background



THE UNIVERSITY of EDINBURGH
Edinburgh Medical School

MBCChB Year 1



Social & Ethical Aspects of Medicine - Year 1

Unit 1: Understanding experiences of Illness

Unit 2: Medical Ethics

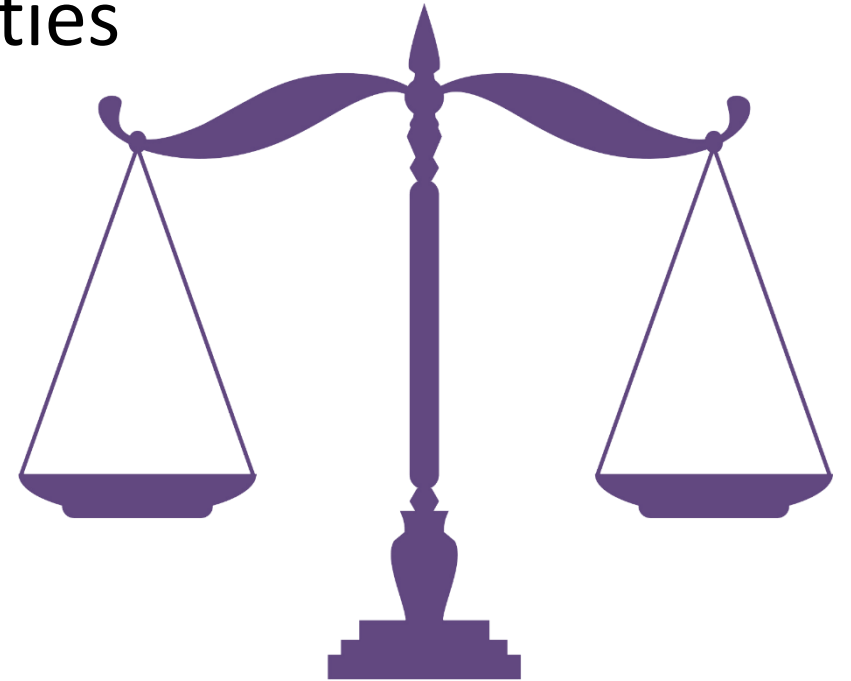
Unit 3: Health in Communities



THE UNIVERSITY of EDINBURGH
Edinburgh Medical School

Background: 'Health in Communities'

- Public Health & Health Promotion – background, principles, aims
- Social determinants and health inequalities
- Action & approaches
 - Primary care; community level; settings approaches; policy
- Topic public health issues
- Community practical



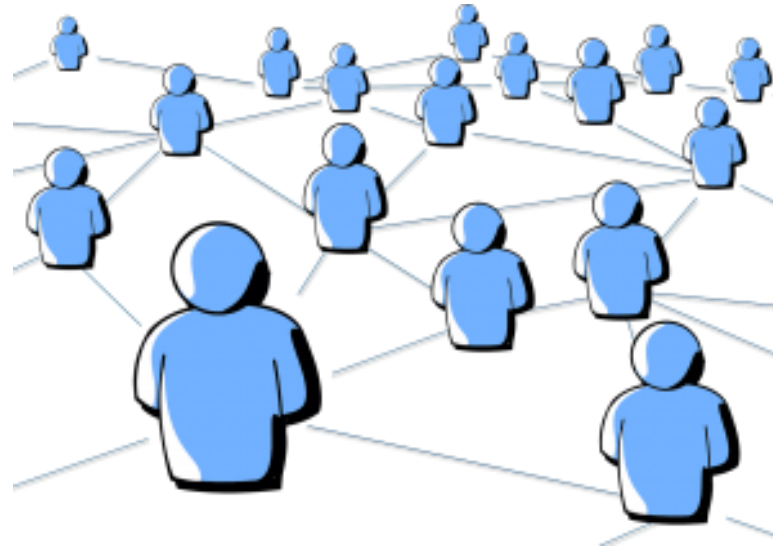
'Health in Communities' practical



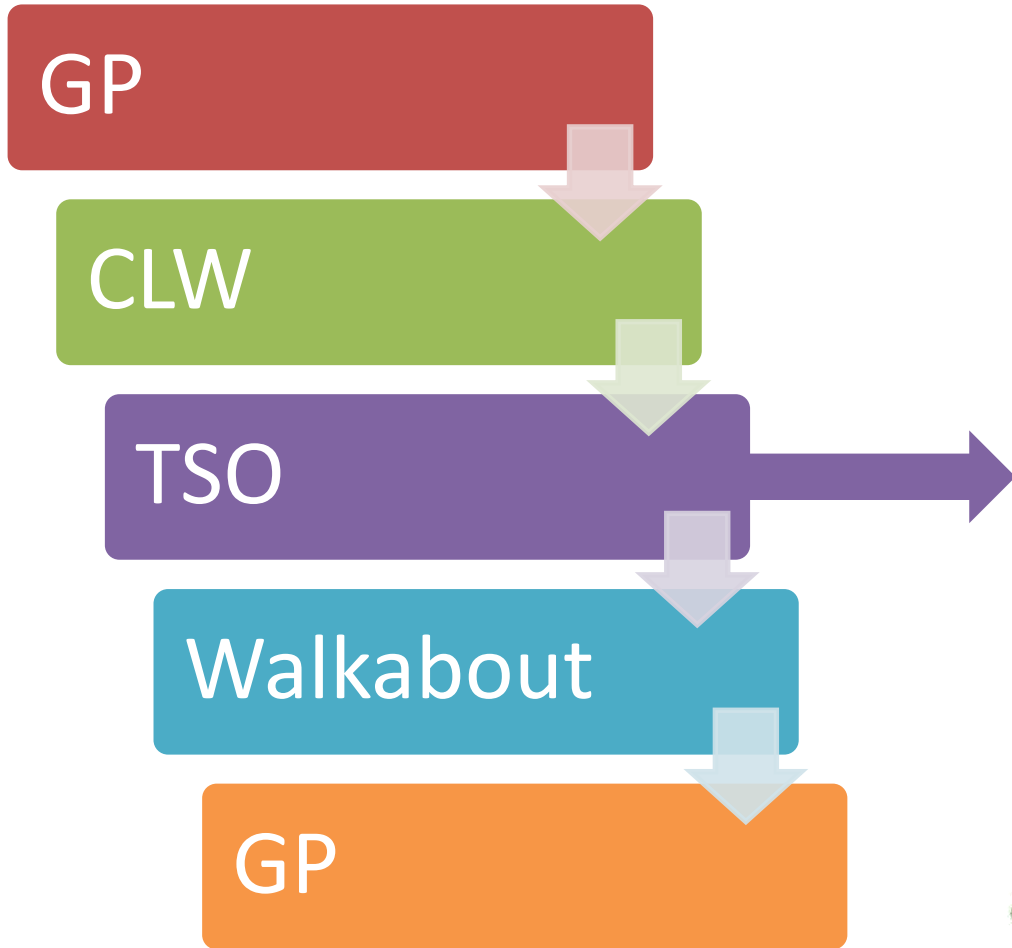
Session with GP Tutor



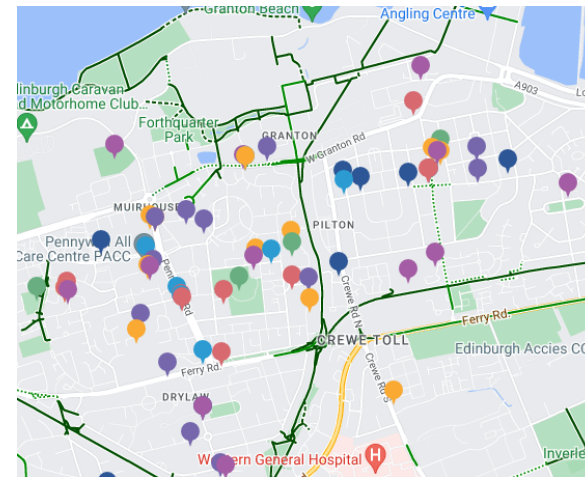
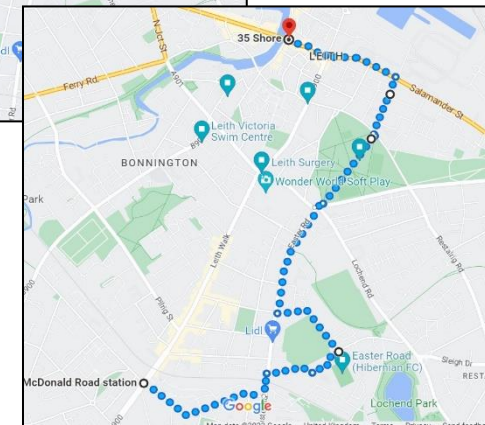
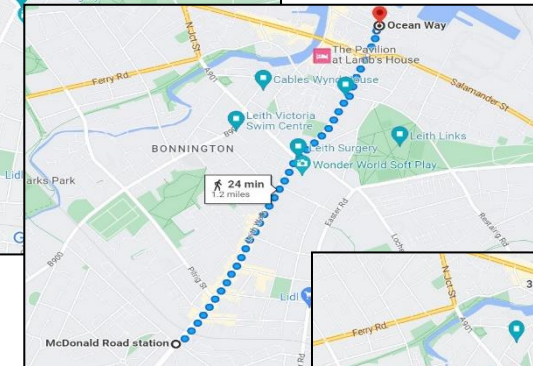
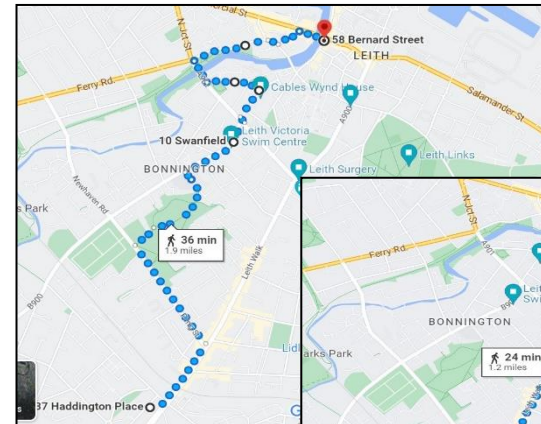
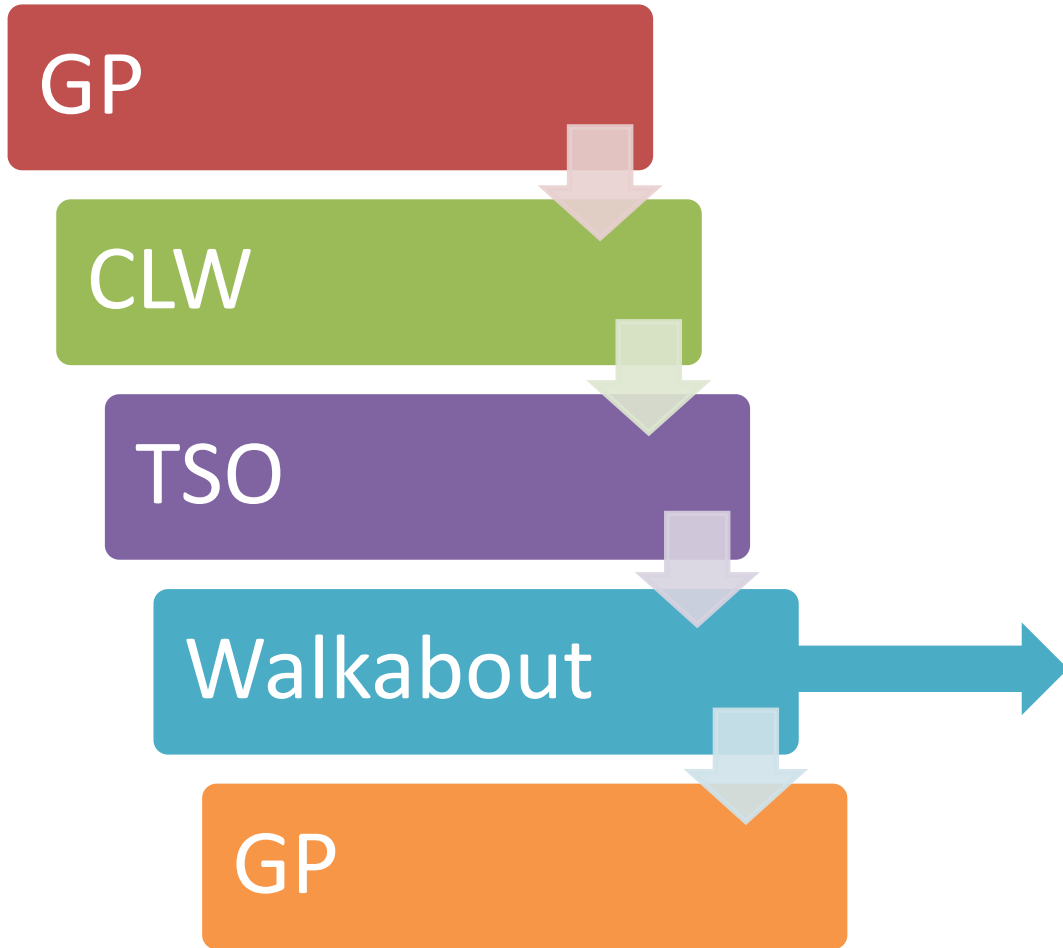
Session with CLW



Connecting with TSOs



“Walkabout”



Practical: Numbers & logistics



Students

- 2021: N=237; 2022: N=257; 2023: N=304; 2024: ↑

Groups of 10-12

- 2021/22: remotely delivered
- 2023: in person (mostly)

By area (2023)

- Edinburgh: 240 students (21 groups); 18 Edinburgh CLWs
- Midlothian: 33 students (3 groups); 2 WSPs
- West Lothian: 9 students (1 group); 2 CLWs
- East Lothian: 22 students (2 groups); 3 CLWs



Community Link Worker Input



- Medical and Social Models coming together
- Informing student at earliest points in their learning
- The power of face-to-face experiential learning
- Wellbeing for link workers



Activity & Discussion



Your reflections

- What would you want future doctors to learn about CLWs and social prescribing? What would you want to show them?
- Is this something you would like to take forward in your area?
- How would you find the most relevant contact in local medical school / nursing school?



Contact details

University of Edinburgh, Health in Communities Unit Lead:

- Helen Eborall h.eborall@ed.ac.uk

Assistant CLW Service Manager:

- Alison Leitch alison.leitch@evoc.org.uk

