

The logo consists of a decorative wreath frame made of leaves and branches, rendered in a light brown color. Inside the frame, the word "art" is written in a large, bold, dark blue sans-serif font. To the right of "art", the word "in" is written in a smaller, white sans-serif font with a thin dark outline. Below "art in", the word "healthcare" is written in a large, bold, dark blue sans-serif font, extending beyond the right side of the wreath frame.

art in
healthcare

BENEFITS OF ART IN RELATION TO HEALTH

PREVENTION:

maintaining good health and wellbeing

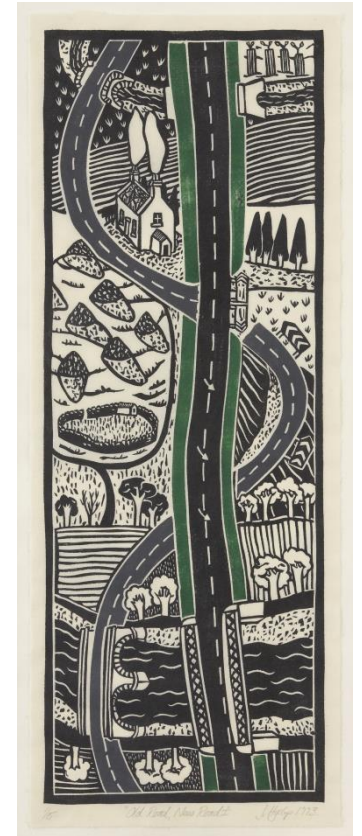


INTERVENTION:

supporting treatment or providing an alternative to treatment

PARTICIPATORY ARTS IN HEALTHCARE SETTINGS

- Improve Mental Wellbeing
- Contribute to Personal Development
- Enhance Community Spirit

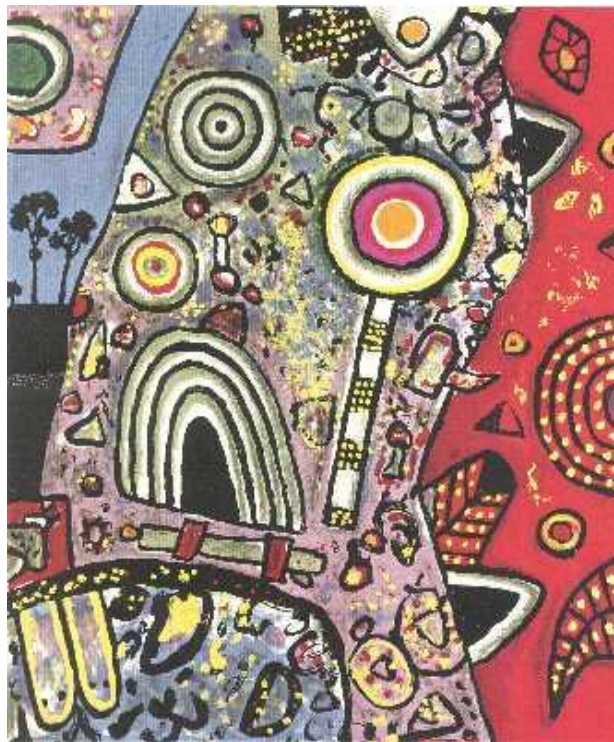


VISUAL ARTS IN HEALTHCARE

- Improve Mental Wellbeing
- Reduce Negative Emotions
- Provide Positive Distraction
- Stimulate Holistic Healing



DIAGNOSED & UNDIAGNOSED NEEDS



DISCUSSION

