

# Member Survey

## 2016 Results Report

You gave the thumbs up for our 4 key health policy areas



Health  
Inequalities



Public  
Health



Mental  
Health



Health & Social  
Care Integration

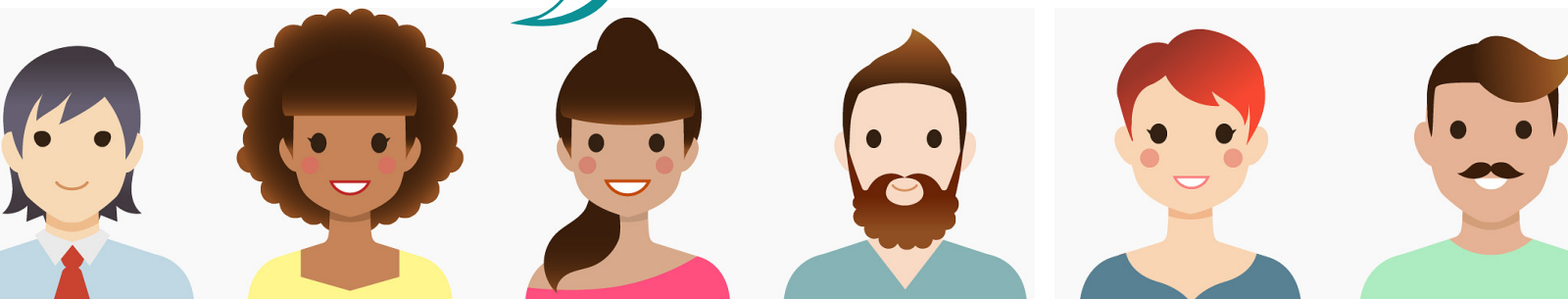
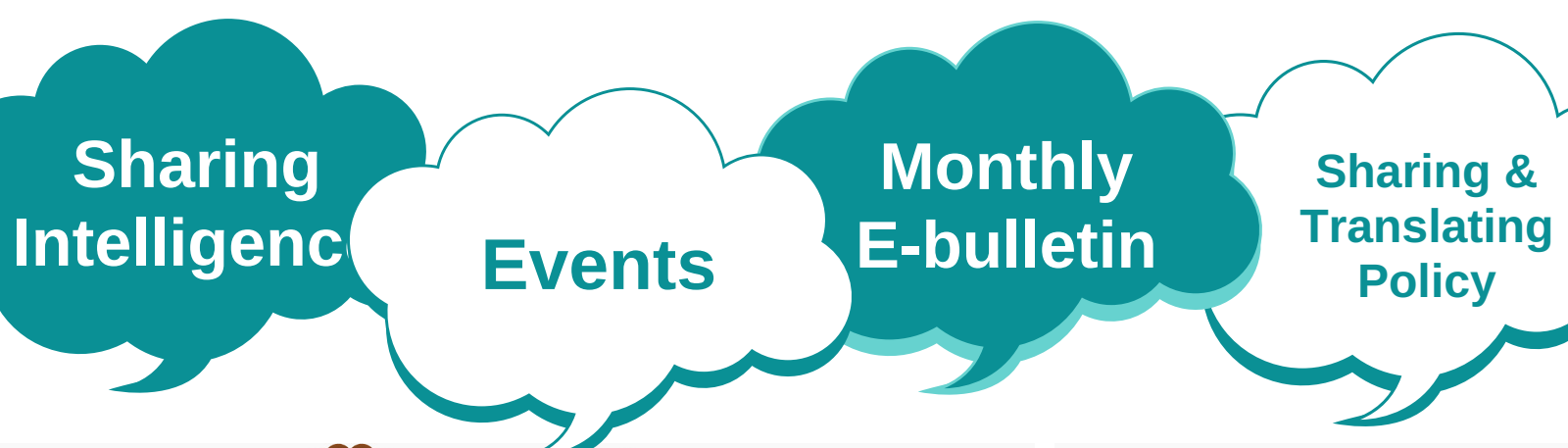
## You told us what you thought of some of our new work areas

The majority of responses showed that members see development of our work on the impact of social isolation and loneliness as either important or very important. This area will be the focus of our annual conference this year. [Learn more about our conference.](#)

As well as lots of positive feedback, you told us where we could do better.  
[Read the full survey results here.](#)



## The top reasons you said you were a VHS member are...



# You let us know what future VHS events you wanted

More  
breakfast  
briefings

Continued work  
on health  
inequalities

More topic  
specific  
events

## You told us that VHS events are...

Topical

Insightful

Relevant



## But some of you did not attend because of...

Diary  
clashes



Time &  
Location



Geography



## You said the one thing VHS could do better at events is...

?

Have more  
time for  
questions  
& answers

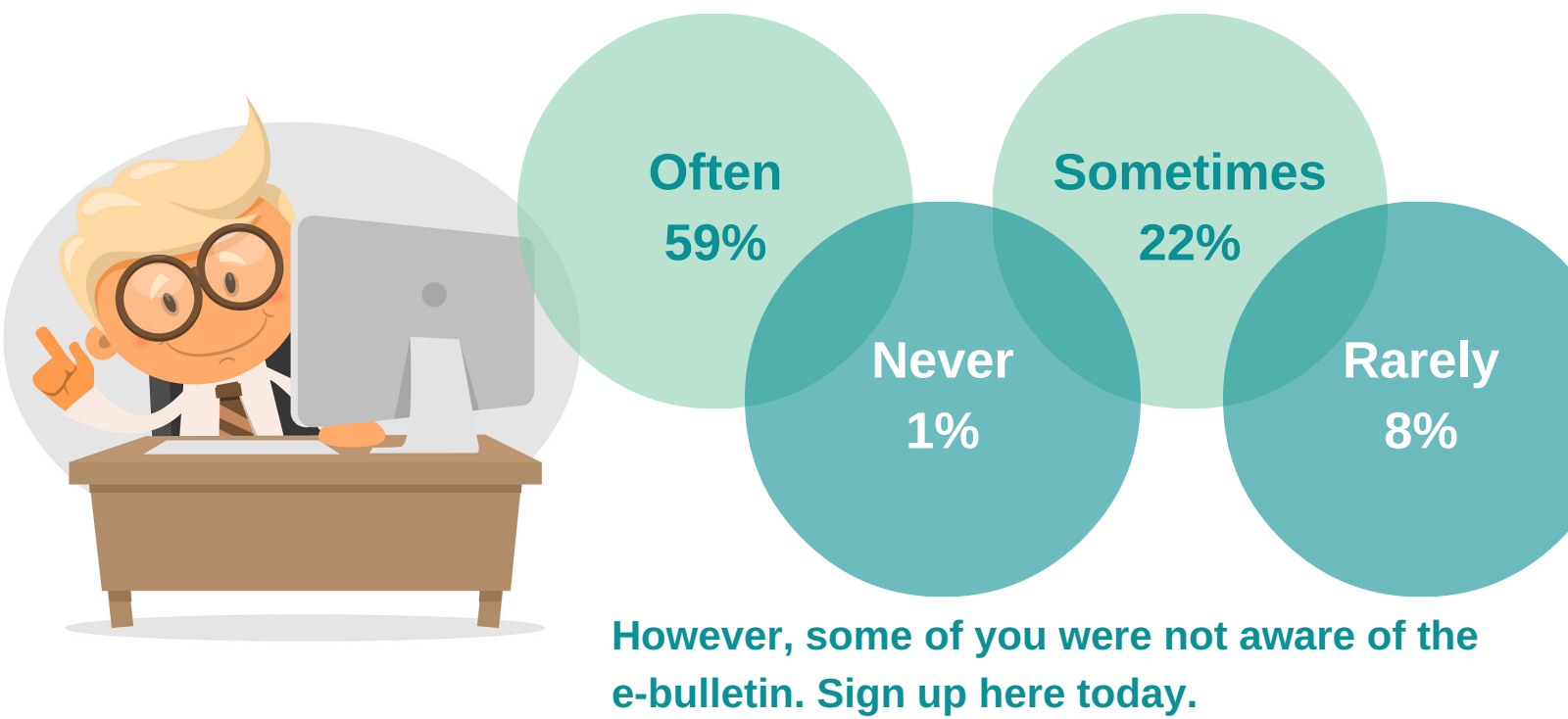


Have more  
events on  
specific  
topics



Have a  
spread of  
event  
locations

# You told us how often you read the VHS monthly e-bulletin...



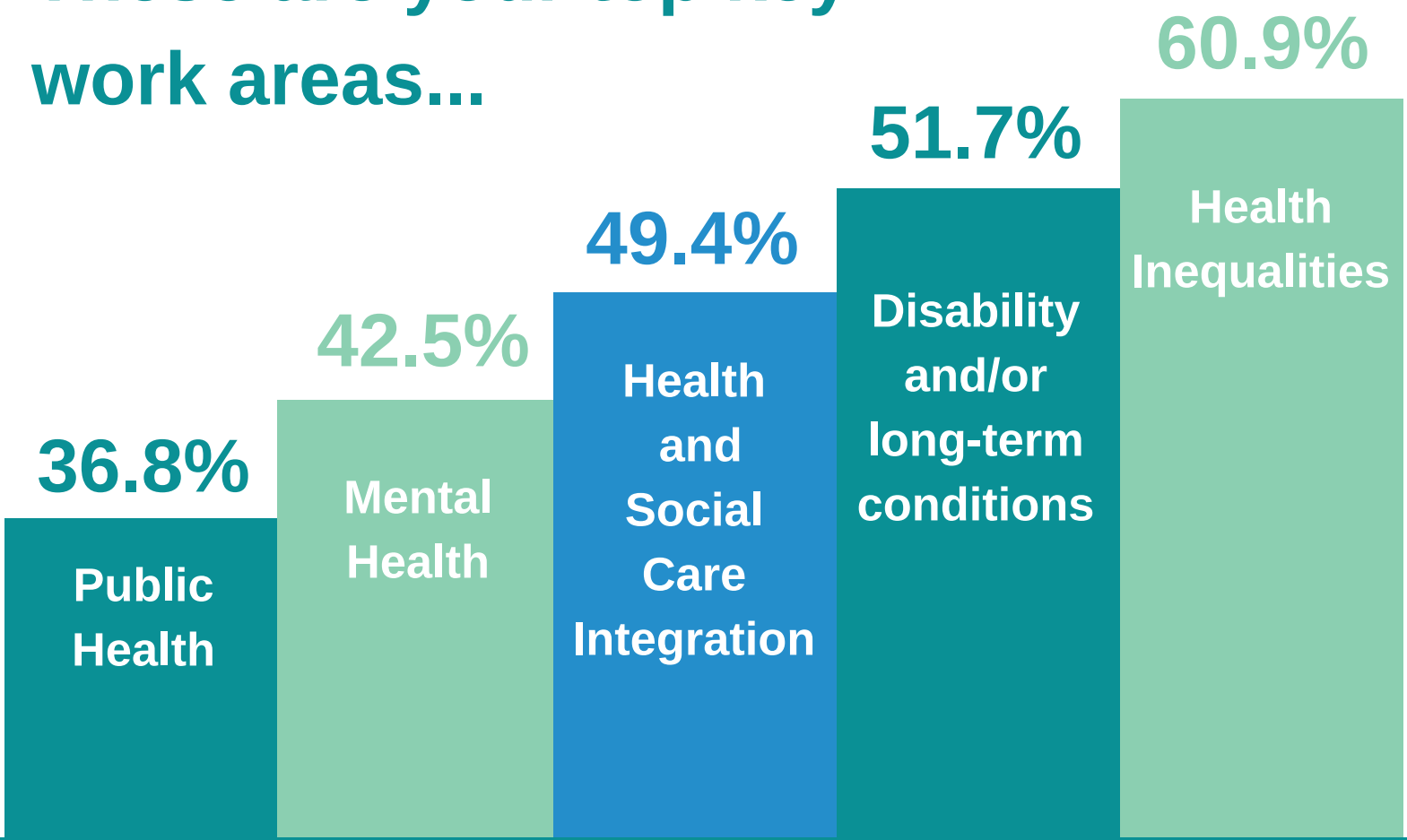
# You told us the VHS monthly e-bulletin is...



# But a few of you said...



# These are your top key work areas...



# You told us the nature of the work you carry out



# Lots of you told us you would be interested in...






## You described VHS as...



## And you also said...

- Attended the Learning to Lead programme - it was excellent!
  - You're all doing a great job - you set the bar for what a small team can achieve
  - Great service, best information
  - Excellent chief officer and staff team
  - Relevant for third sector
  - A very useful source of all sorts of information and guidance
- 



## What we will do next

Take on board your suggestions for things we could do differently or better and build them into our 2017/18 plan.

Thank you for sharing your views!



Read the full version of the membership survey results report [here](#).